



DENVER PUBLIC SCHOOLS  
FOUNDATION



## ANNUAL REPORT 2018-2019



# INVEST. CONNECT. INSPIRE.

We don't use stock photos. These are the faces of our future. They are depending on all of us.

Students First. Integrity. Equity.

OUR STUDENTS  
DEPEND ON DENVER  
PUBLIC SCHOOLS.  
DENVER PUBLIC  
SCHOOLS DEPENDS  
ON ALL OF US.



Collaboration. Accountability. Fun.



**At the Denver Public Schools Foundation,** we believe our city is strengthened by every student who graduates ready to lead a successful life. This past year with donor support **we have invested** in accelerating progress for Denver Public Schools (DPS) students, **we have connected** the community to our classrooms and **we have inspired** confidence in the promise of public education.

We believe in putting our students first and holding each other accountable. Our DPS Foundation Core Values guide us in all that we do so that all students may reach their highest potential. Our core values are: Students First, Integrity, Equity, Collaboration, Accountability, and Fun!

**This showcase of success is in large part thanks to the partnership and financial contributions of our loyal supporters.**

WE BELIEVE OUR CITY IS STRENGTHENED



BY EVERY STUDENT

# JOHN H. AMESSE ELEMENTARY: A DEEPER LOOK AT OUR IMPACT

>> At John H. Amesse Elementary, we support students a variety of ways.



## Afterschool Programs

At Amesse, students take part in Lights on Afterschool (LOAS), a partnership between the DPS Foundation, Mile High United Way and the City and County of Denver that is supported by Wells Fargo and other partners each year. The program provides funding to ensure quality, school-based afterschool programs to keep students engaged in enriching learning experiences once the school day is over. Research shows that afterschool programs can reduce barriers to youth success for students who are facing challenges such as low academic achievement, poverty and truancy. Students in afterschool programs have fewer behavioral problems, greater self-confidence and can handle conflict better than students not enrolled. LOAS makes it possible for community organizations to provide a wide range of opportunities at DPS elementary and middle schools including art, dance, computer, photography classes, and more.

## FACE Centers served

over 1,500 participants  
from more than 100 schools  
within the district between  
May 1, 2018 - April 30, 2019.



## Family and Community Engagement (FACE) Centers

FACE Centers create educated, engaged and empowered school communities where Every Child Succeeds. One of the district's FACE Centers lives at Amesse and provides services that promote economic self-sufficiency and student academic achievement to all community members. These centers provide multi-generational wrap-around services that are a one-stop hub connecting students, families and our community to free services, thereby helping empower parents to be role models for

their children as lifelong learners. In the next year, DPS Foundation will continue to support the FACE Centers as DPS works to expand these centers into five satellite locations in high schools across the district.



Amesse Elementary is a school where 96% of students qualify for Free and Reduced Lunch, which is a key indicator of poverty and how DPS tracks highly-impacted schools.

## Trauma-Informed Practices

DPS Foundation received a \$1 million grant in 2017-18 from the Campbell Foundation, a donor-advised fund of The Denver Foundation, to support trauma-informed practices in DPS. The grant funds training and coaching of educators, and a portion of the grant will also be used to develop and implement a therapeutic day school. At Amesse Elementary, trauma-informed practices are used every day. Students may choose their own plan to repair an issue and decide how they should re-enter the classroom. Other students may fill out a calming sheet, sharing how their morning went, explaining why they are in the trauma office, and stating what help they need to be successful for the day.

Generous donor support directly enables these successes at schools like Amesse Elementary.

WHO GRADUATES READY TO LEAD A SUCCESSFUL LIFE



# INVEST

**\$1.5 million**



**to create up to 40 new  
afterschool programs**

We received a **\$1.5 million pledge** of support from the Colorado Health Foundation that will be used over the next two years to create up to 40 new

afterschool programs that will expand access to physical activities after school. This will allow DPS to increase out-of-school opportunities for high-needs schools that have more than 60% of the student population who qualify for Free and Reduced Lunch.

## Teacher and School Leader Growth & Support

We partnered with Thrive Fellowship to secure a **\$2 million grant** from Bloomberg Philanthropies. This innovative new pilot provides 20 DPS teachers with resources and training to coach other teachers, thereby supporting our workforce and leadership development initiative.



**A TO Z FUND CLASSROOM GRANTS FOR TEACHERS**



**HAS REACHED**



## EDCONNECT

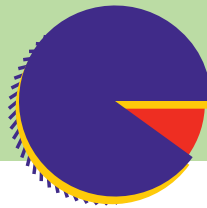
This career pathway program provides DPS high school students with coursework and real-world learning to become teachers, helping the district train and hire talent from within DPS. The first of its kind in the nation, EdConnect is made possible in part by support from The Janus Henderson Foundation.

In 2018, we saw tremendous growth in the program with EdConnect **ENROLLMENT**

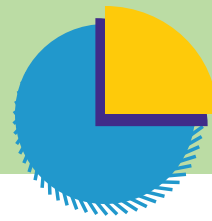
– UP –  
**23%**

and more than **400 students** participating.

Through intentional mentoring and recruitment



over **90%** of participants are students of color



**25%** of the students are bilingual

## A TO Z FUND

**A to Z Fund Classroom Grants for Teachers has reached nearly \$2 million invested into classrooms since its inception in 2006.** The A to Z Fund provides grants to individual schools for programs and activities that go beyond the limits of schools' budgets. In 2018-19, DPS Foundation awarded 107 grants totaling \$158,251 to support the purchase of books, field trips, musical instruments, registration fees for various educational competitions, and more. The average 2019 award was \$1,479.

*“Thanks to the A to Z Fund money, we were able to create a club that meets weekly to learn about geography and apply that learning to the National Geographic Spelling Bee. We hosted our Bee today, the first in our school’s history, and had a great time with families, students and staff. Thank you for providing the funding to make this experience a reality for our students and families.”* – Jamie Nicholas, Assistant Principal, Kaiser Elementary



Thanks to ongoing donor support, the DPS Foundation is continuing to further empower teachers to provide their students the opportunities, resources and experiences they need to reach their highest potential.

**NEARLY \$2 MILLION INVESTED  
SO TEACHERS DON'T HAVE TO TAKE MONEY OUT OF THEIR OWN POCKETS**



**107 GRANTS TOTALING \$158,251 AWARDED IN 2018-19**

# MARCY & BRUCE BENSON

Lifelong champions of students

Marcy and Bruce Benson have demonstrated an exemplary commitment to the students of Denver, making unique and lasting contributions to DPS and the DPS Foundation for more than 20 years. Their ongoing support has had tremendous impact on the work being done to ensure every child in Denver has the opportunity to succeed.

**“IF WE DON’T TAKE CARE OF OUR KIDS NOW, WE WILL TAKE CARE OF THEM IN THE FUTURE.” –BRUCE BENSON**

The Bensons have provided longtime support to DPS and the DPS Foundation, including transformational financial and in-kind contributions, while also serving as champions and thought-partners. Of primary note, when the DPS Foundation was revitalized in 2002, the Bensons were the driving force to make it an organization of prominence. Serving as Board Chair for six years and leading the revitalization, Bruce’s commitment to the DPS Foundation helped grow private support for DPS from \$315,000 to more than \$10 million when he concluded his service in 2008. Under Bruce’s leadership, the DPS Foundation raised millions to support academic and enrichment programs, contributing to the incredible growth and impact the DPS Foundation has had in recent years on the quality of educational opportunities for students across the city.

In addition to his time and contribution of unique expertise around college readiness and higher education, the annual DPS Foundation Achieve Gala was the creative genius of Bruce’s term as Board Chair. Committed to growing the gala event, the Bensons have annually supported the Achieve Gala as premier sponsors. Marcy and Bruce attended the first annual Achieve Gala where the North High School drumline performed a song. At the



time, the students didn’t have uniforms. Marcy and Bruce realized this and rallied around the students to ensure that every band member would receive a uniform they could wear with pride. This act of kindness is a great example of what the Bensons are all about.

The Bensons’ hard work and dedication on behalf of students is inspiring. Without the unique contributions of partners like Marcy and Bruce Benson, the DPS Foundation’s work wouldn’t be possible, and the progress of our school system might not be so extraordinary. We are grateful for the leadership, vision and inspiration of Marcy and Bruce Benson.

***“When I first joined the DPS Foundation almost four years ago, the Bensons did not hesitate to immediately make time to meet me. It was important to them to understand my vision for the DPS Foundation and within that, to see how they could help ensure that it continues to be successful in supporting DPS students and schools. Their dedication to lend a helping hand as I stepped into my role shows their true commitment to bettering the Denver community by mentoring leaders.”*** - Verónica Figoli, DPS Foundation President & CEO



# CONNECT

School Partners contributed



**\$341,152**

in school-directed and  
in-kind donations to  
**30 different schools**  
and 4 district programs this year

## School Business Partner BPX Energy



- DPS Foundation School  
Partner of the Year  
Award Winner
- Partnered with Colfax  
Elementary in 2018-19,  
providing the school:

**150** New  
Chromebooks

**342** New coats to  
all students

**25** Volunteers to host a  
service and education day

**9** Attendance parties hosted  
for students. The students  
loved these parties and educators  
said they believed the parties  
encouraged attendance and made  
their students feel special.



# DPS FOUNDATION ALUMNI COMMITTEE



**Have you heard?  
We now have  
an official DPS  
Alumni Network!**

The DPS Foundation is **excited to announce** that we have **launched a DPS Alumni platform** for informal mentorship, networking, and professional support, and it is designed exclusively for our alumni. DPS alumni can join the network to stay engaged with other alumni community members who share the common connection of attending Denver Public Schools. To receive information about programs, events and the latest DPS Foundation news, visit [dpsfoundation.org/alumni](https://dpsfoundation.org/alumni).



## Alumni Feature

Sia is a passionate and driven DPS alumna who supports the DPS Foundation as a donor and dedicated volunteer. She serves on our DPS Foundation Alumni Committee where she co-hosted the DPS alumni 3-on-3 basketball tournament at Manual High School. The large number of participants included a special appearance by Mayor Michael B. Hancock. Sia is always willing to volunteer at events, including the annual Achieve Gala, and she is a consistent attendee at DPS Foundation alumni meetings. She constantly shares a big smile and positive attitude, and we continue to be grateful for Sia's support so that all students may graduate ready to lead a successful life.



**“I GIVE  
FOR  
TEAM DPS  
BECAUSE...”**



**I see the need to be active. I am a current DPS employee and I actively participate when opportunities arise. I am connected because students of color may benefit from seeing someone like them, making a decision to give back and participate in their learning journey.”** - Sia Chandler, Director of GED, Emily Griffith High School

**THE ALUMNI COMMITTEE HOSTED ITS FIRST 3-ON-3 BASKETBALL TOURNAMENT.  
THE WINNING TEAM, LINCOLN “11” WAS CHEERED ON BY MANY  
COMMUNITY MEMBERS, INCLUDING MAYOR MICHAEL B. HANCOCK**



# PARTNER HIGHLIGHTS



**“Getting a chance to go on the HBCU tour was amazing. Getting to see people that have the same color as you, and succeeded AND that want to do great things is amazing. It definitely opened my eyes to check out those schools.”** - Dachaun, 12th grader

## United Airlines Travel Grant



United Airlines has been a strong partner for DPS and DPS Foundation by donating **more than \$275,000** in airline tickets. This support has allowed numerous students and staff to attend enriching educational opportunities they couldn't otherwise.

This year, a group of students mentored by the FACE department embarked on a tour of Historically Black Colleges and Universities (HBCUs). Because of the generosity of United Airlines, 40 students were able to financially afford and experience a tour of a lifetime.



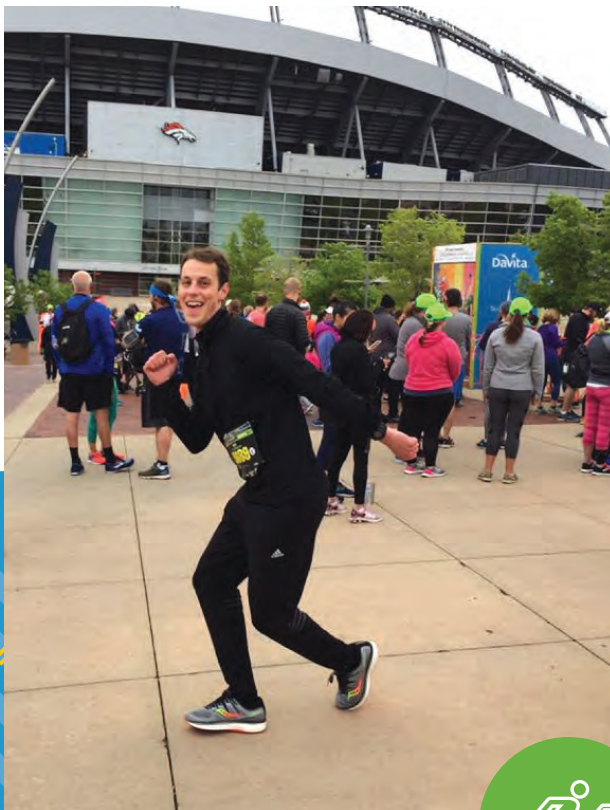
**“When I stepped into the school, I heard the music and saw the whole vibe. I came back here, applied and got accepted so that’s where I’m going to be attending next year.”** - Khaaliq, 12th grader

**Out of the 40 students**

**11** were seniors who had not yet declared what college they wanted to attend or didn't even think about college as a possibility

**9** of the 11 seniors are now going to college and six of them received on-the-spot offers at the colleges visited

**“It was a reality check for me. I’m the first generation to go to college and it’s kind of different because nobody else has experienced what I got to experience on that trip.”** - Joy, 9th grader



## Colfax & COGA

With 144 runners, DPS Foundation placed first among Colfax Marathon Charity Partners for runner participation. *I Run for Team DPS* raised \$13,850, in large part thanks to our top fundraisers Jessica and Trevon Brandhorst, and the Colorado Oil and Gas Association (COGA), who once again partnered with DPS Foundation.

**Thank you to our runners, fundraisers, cheerleaders, and supporters for making Colfax Marathon 2019 a huge success!**

**“We are so grateful for the partnership with the DPS Foundation. Our members embraced the Colfax Marathon challenge enthusiastically, making it a friendly competition for the best completion times, and also for bragging rights on the most funds raised. We can’t wait to do it again next year!”**

- Sara Reynolds, Vice President of Operations, Colorado Oil & Gas Association



# INSPIRE



## ACHIEVE GALA 2019

was an extra special event this year. Hosted by Gala co-chairs **Jolon Clark** (President of Denver City Council), **Brittany Morris Saunders** (President of Local Affairs, Sewald Hanfling Public Affairs), **Jon Roitman** (SVP of Airport and Network Operations, United Airlines), and **Darryl Traweek** (West Divisional Director, RBC Wealth Management - U.S.), it was a night that almost didn't happen due to weather. But our vendors, attendees and sponsors rallied together to make a newly scheduled date possible.

**While we are proud to have surpassed our event fundraising goals, the real successes were the profound experiences had by the nearly 200 students who took part in the event:**

» Our emcee Tanner experienced increased confidence as the event built in excitement.



» Keynote speaker Jimena experienced so much inspiration that she is now working as a DPS Foundation summer intern.

» The all-abilities Unified Theatre group participants from John F. Kennedy High School experienced appreciation during the standing ovation they received after ending their skit.



If we had not been able to reschedule, we would not have been able to give our students these moments. The event was a testament of the immense power we have as a community.

Thank you to premier sponsors: Presenting Sponsor Western Union Foundation, United Airlines, Polsinelli, Cille & Ron Williams, Walton Family Foundation, RBC Wealth Management, The Anschutz Foundation, DaVita, Elaine Gantz Berman & Stephen Berman / Kristin & Blair Richardson, and Hyatt Regency Denver at Colorado Convention Center, and all others for helping ensure this night was a success!



NEARLY 200 STUDENTS TOOK PART IN ACHIEVE GALA 2019



## THANK YOU to all who attended our first ever documentary screening in October 2018!

The successful **sold-out** night showed the film *Paper Tigers* and was followed by a highly engaging panel discussion.

*Paper Tigers* is a look into the lives of students at Lincoln High School in Walla Walla, Washington. The school specializes in educating children who have experienced trauma. The film intimately examines trauma-informed best practices that are critical to recognize and deal with in a supportive and timely manner. The film ties closely to the DPS goal to become a trauma-informed district.



ONE OUT OF EVERY FOUR CHILDREN ATTENDING SCHOOL HAS BEEN EXPOSED TO TRAUMA, SUCH AS DIVORCE, FOOD INSECURITY, HOMELESSNESS, OR DEATH OF A FAMILY MEMBER





# DPS FACTS: IMPACT BY THE NUMBERS

**For the ninth consecutive year,**



students in Denver Public Schools **outpaced their peers across Colorado** in year-to-year academic growth in **both literacy and math** on the statewide exams for third- through eighth-graders.

**On the 2019 Colorado Measure of Academic Success, DPS students have a combined growth score of**



**55 in literacy**



**53 in math**

A growth score of 50 is set as the average score for students across the state, and this marks the ninth straight year (which includes the transition from the former CSAP assessment to CMAS) that DPS students have posted growth scores above 50 in both literacy and math.



**For DPS English-Learners, more than half (57%) are on-track to acquire English proficiency, an increase of one percentage point over last year.**

English-Learners continued to exceed the district's growth benchmark on the Colorado Spanish Language Arts test. DPS sets an expectation that 60% of English-Learners will meet the growth expectation that will put them on track for English proficiency. In 2019, 62% of these students met or exceeded that growth exception.

**CareerConnect is helping our students achieve success. Students who participate in a CareerConnect internship are**

**270% more likely to graduate on-time.**



**DPS STUDENTS OUTPACED**



**THEIR PEERS ACROSS COLORADO**



“We are working toward making equity

## DPS WELCOMES NEW SUPERINTENDENT, SUSANA CORDOVA

We were excited to welcome **Susana Cordova** as the new superintendent for Denver Public Schools this past year. As a past DPS teacher, Susana is a nationally recognized education leader who has devoted her professional life to serving children and families. She is a first-generation college graduate who deeply understands the power of education to change lives. Susana, previously the district’s deputy superintendent, is a DPS graduate who has spent her career in DPS classrooms as a bilingual secondary teacher, principal of a high-needs elementary school and administrator. The DPS Foundation is excited to work together with Susana, where we will partner with DPS to close the opportunity gap for our students of color and students from low-income backgrounds.



our core identity.”  
– Susana Cordova



“We still have a lot of work ahead to drive bigger gains in proficiency and in closing our achievement gaps and we need to learn from schools like Dora Moore and the others across DPS for the outstanding work they’re doing. **These are schools where targeted, focused strategies around instructional excellence and equity are driving significant progress.** Our work ahead is to bring that to scale, to collaborate across all of our schools to make broader and deeper gains that lift up the students who need extra support.” – Susana Cordova, Superintendent, Denver Public Schools

“The success of Denver Public Schools is the beacon to outsiders – as it translates to attracting and retaining talent and businesses. I am excited to join Verónica, Susana and the DPS Foundation as we focus on equity for our students. This is a topic that means so much to me personally, as I have seen firsthand the disparities amongst our schools and students. **We have amazing and supportive educators in DPS** and we still have a long way to go to support our students and teachers.” – Priya Burkett, Board Chair, DPS Foundation



IN YEAR-TO-YEAR ACADEMIC

GROWTH IN LITERACY & MATH



# FINANCIALS

## STATEMENT OF ACTIVITIES AND CHANGE IN NET ASSETS

Fiscal Year Ended June 30, 2019

### Revenue, gains, and other support:

Contributions:	
Family and grant-making foundations & organizations .....	\$9,440,000
Corporate & corporate foundations .....	1,563,000
Individuals .....	299,000
Local government & agencies .....	108,000
In-kind .....	64,000
Special events, net .....	935,000
Interest income .....	181,000

**Total revenue, gains, and other support** **\$12,590,000**

### Expenses:

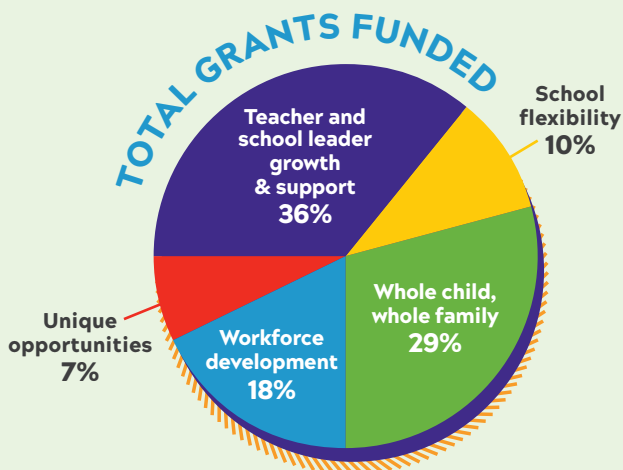
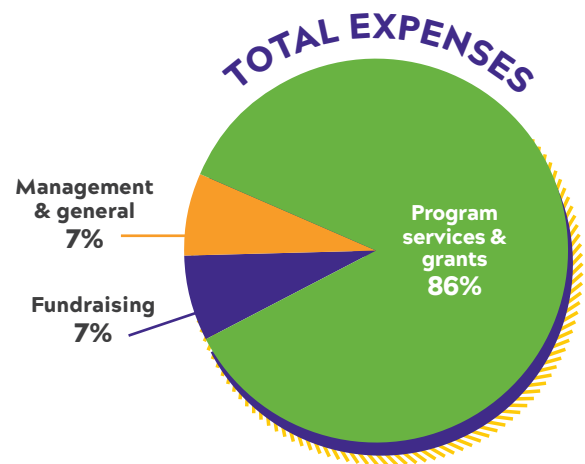
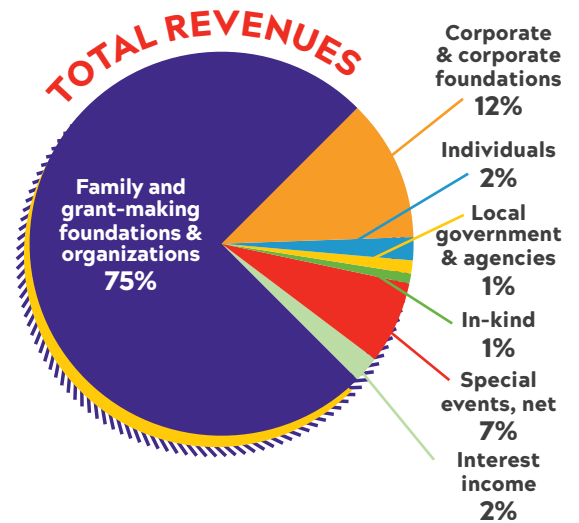
Program services & grants .....	\$7,542,000
Management & general .....	586,000
Fundraising .....	641,000

**Total expenses** **\$8,769,000**

Change in net assets .....	\$3,821,000
Net assets, beginning of year .....	8,846,000

**Net assets, end of year** **\$12,667,000**

DPS Foundation received an unmodified opinion by independent auditors Plante & Moran, PLLC for the year ended June 30, 2019. The complete Financial Statements and Independent Auditors' Report are available upon request.



### Grants funded:

Teacher and school leader growth & support .....	\$2,670,000
School flexibility .....	774,000
Whole child, whole family .....	2,125,000
Workforce development .....	1,306,000
Unique opportunities .....	509,000

**Total grants funded** **\$7,384,000**

# BOARD OF DIRECTORS

## OFFICERS

**Priya Burkett**, *Board Chair*  
*Chair of Executive Committee*  
Community Leader

**Jeanne Saunders**, *Board Chair-Elect*  
*Chair of Governance Committee*  
Owner, Saunders Financial

**Cedric Buchanon**, *Treasurer*  
*Chair of Finance Committee*  
Market President-Metropolitan  
Denver, 5 Star Bank

**Adam Donner**, *Secretary*  
*Chair of Development Committee*  
Founder and VP of Operations,  
Photogra, Inc.

**Leanna Clark**, *Immediate Past*  
*Board Chair*  
Vice Chancellor of University  
Communications, University of  
Colorado Denver

## BOARD MEMBERS

**Kim Allegretti**  
President, Venn Travel  
Attorney, McCollum Crowley,  
Moschet, Miller & Laak

**Christine Benero**  
President & CEO, Mile High  
United Way

**Linda Campbell**  
Restorative Justice Practitioner,  
Shoemaker Elementary of Denver  
Public Schools and the Barton  
Institute for Philanthropy and  
Social Enterprise

**Christy Crase**  
Senior Vice President & General  
Counsel, Professional Case  
Management

**Susana Cordova**, *Non-voting*  
Superintendent,  
Denver Public Schools

**Jeff Dolan**  
Vice President of External Affairs,  
Comcast Cable

**Jennifer Evans**  
Shareholder, Polsinelli

**Mike Ferrufino**  
President & CEO, Hispanic  
Chamber of Commerce  
of Metro Denver

**Russell Hedman**  
Senior Associate,  
Hogan Lovells US LLP

**Emanuel (Manny) Hilario**  
President & CEO, The ONE Group

**Benjamin Kuruvila**  
Senior Vice President,  
Commercial Real Estate, U.S. Bank

**Patsy Landaveri**  
Senior Colorado Community  
Affairs Advisor, Noble Energy

**Sarah McCarthy**  
Ambassador Engagement,  
Project C.U.R.E.

**Jacqueline Molnar**  
Chief Transformation Officer  
& Global Head of Compliance,  
Western Union and Chair of  
Western Union Foundation

**Ruth Rohs**  
Vice President of Corporate  
Communications,  
IMA Financial Group

**Jon Roitman**  
Senior Vice President, Airport and  
Network Operations, United

**Anne Bye Rowe**, *Non-voting*  
President, Denver Public Schools  
Board of Education

**Alyssa Whitehead-Bust**  
Partner, Attuned  
Education Partners

**Dee Wisor**  
*Chair of Audit Committee*  
Attorney, Butler Snow LLP

**Rebecca Grant Zarret**  
*Chair of Allocations Committee*  
Adjunct Faculty, University of  
Colorado Denver

*DPS Foundation Board of Directors  
and team lists are current as of  
September 15, 2019.*

# DPS FOUNDATION TEAM

**Verónica Figoli**  
President & CEO

**Traci Brooks**  
Executive & Board  
Relations Manager

**Kaytie Buell**  
Accountant

**Libby Hodgkin**  
Events & Development Associate

**Lauren Lindgren**  
Grants Management Officer

**Kimberly Martinez, CPA**  
Vice President of Finance  
& Operations

**Ashley Muramoto**  
Marketing &  
Communications Director

**Rebecca Reutlinger**  
Vice President of Development

**Kimberly Reynders**  
Database Specialist

**Katie Wienecke**  
School Partners Program Manager

**Elyse Williams**  
Development Associate

**Zahra Abdulameer**  
Communications Intern

**Jimena Cristerna**  
Summer Development Intern



# COMING SOON!



ACHIEVE GALA 2020

Save the Date for Achieve Gala 2020  
on Thursday, April 23, 2020.  
Hyatt Regency Denver at  
Colorado Convention Center



## THANK YOU!

We are grateful to our investors, community members and volunteers who help us create opportunities for DPS students so that all students may graduate ready to lead a successful life. Without you, this work would not be possible. Our city only thrives when our students thrive. We are grateful to all be in this together. View the donor roll online at [dpsfoundation.org/our-impact](https://dpsfoundation.org/our-impact).



# THANK YOU TO OUR GENEROUS DONORS

## **\$250,000+**

Anonymous donor-advised fund of  
The Denver Foundation  
Anonymous donor-advised fund of  
Fidelity Charitable  
Bloomberg Philanthropies  
The Colorado Health Foundation  
JPMorgan Chase Foundation  
Mile High United Way  
The Wallace Foundation  
Wells Fargo Foundation

## **\$100,000 to \$249,999**

Anonymous  
Denver Broncos Football Club &  
Red Zone Partnership - Noble Energy  
The LARRK Foundation  
Project Lead The Way, Inc.  
W.K. Kellogg Foundation  
Western Union Foundation

## **\$25,000 to \$99,999**

Anonymous  
The Anschutz Foundation  
DaVita, Inc.  
Denver Center for the Performing Arts  
Elizabeth S. & Mary A. Brauer Charitable  
Fund, a donor-advised fund  
at Schwab Charitable  
Granicus  
Sarah & Erik Hagevik  
Hyatt Regency Denver at  
Colorado Convention Center  
Ping Identity  
Polsinelli  
RBC Wealth Management - U.S.  
RICOH  
Suncor Energy  
TIAA  
TIBCO Software  
U.S. Bank Foundation  
United Airlines  
Vertafore  
Vista Equity Partners  
Walton Family Foundation  
Cille & Ron Williams

## **\$10,000 to \$24,999**

Anonymous  
Belay Fund, a donor-advised fund of  
The Denver Foundation  
Ben & Lucy Ana Walton Fund, a donor-advised  
fund of The Denver Foundation  
Marcy & Bruce Benson  
Tom Boasberg  
Dawn Bookhardt  
BuildStrong Education  
Priya & Matthew Burkett  
Carson Foundation  
Comcast & Comcast Foundation  
Connie Burwell White &  
William W. White Foundation  
Stephanie & Adam Donner  
Ernest S. Madison Family Foundation,  
a donor-advised fund of  
The Denver Foundation  
Cathey & Dick Finlon  
FirstBank  
Fred & Jean Allegretti Foundation  
G2 Secure Staff  
HealthONE  
Hogan Lovells

Mary Holleman  
IMA Financial Group & IMA Foundation  
Karen Harris & Robert Gips Giraffe Fund VII,  
a donor-advised fund of Fidelity Charitable  
Kelley Knox Family Foundation  
Kroenke Sports and Entertainment, LLC  
Susan & Bruce Madison  
MDC / Richmond American Homes Foundation  
Menzies Aviation  
Noble Energy  
Preston A.C. & Lorene S. Anderson  
Charitable Fund, a donor-advised fund  
of The Denver Foundation  
RevGen Partners  
Kristin & Blair Richardson  
RK Foundation  
Kim & Bret Siepman  
Mimi & Phillipp Stephanus  
STK Denver  
Sylvia Knobloch Brown Fund, a donor-  
advised fund of The Denver Foundation  
Westerra Credit Union  
Rebecca Grant Zarret & Scott Zarret

## **\$5,000 to \$9,999**

Anonymous  
ABM Aviation  
Acorn Hill Foundation, Inc.  
Adolfson & Peterson Construction  
ALC  
Alpine Bank  
Arizona Epoxy Systems  
Ashford University  
Barbara & Daniel Berv  
Kelli & Cedric Buchanon  
Butler Snow LLP  
Stacy Carpenter & Justin Prochnow  
CIGNA Foundation  
Citywide Banks  
Susana Cordova & Eric Duran  
Nicole & Scott Delmoro  
Delta Dental of Colorado  
Denver Health  
Denver Museum of Nature & Science  
GH Phipps Construction Companies  
Antonio Greene  
Sylvia & Emanuel "Manny" Hilario  
Rachel & Tim James  
Janus Henderson Foundation  
Liberty Global, Inc.  
LIV Sotheby's International Realty  
LOA Architecture  
Load to Ride  
Linda D. Campbell Fund, a donor-advised  
fund of The Denver Foundation  
Honorable Donna Lynne & Jim Brown  
McKinstry  
Mortenson  
OneNeck IT Solutions  
Plante Moran  
Precourt Foundation  
PrimeFlight Aviation Services  
Rose Community Foundation  
Jeanne Portmann Saunders &  
Richard Saunders  
Karen & Joel Schimke  
SecurAmerica  
Semple, Farrington, Everall & Case, P.C.  
Slavens School PTA  
Stifel  
Technology Integration Group  
Tender Belly

U.S. Engineering Company  
UMB  
Xcel Energy & Xcel Energy Foundation

## **\$2,500 to \$4,999**

Anonymous donor-advised fund of  
The Denver Foundation  
Raydean Acevedo  
Aetna  
Elaine & Max Appel  
BBVA Compass  
BC Interiors  
The Benevity Community Impact Fund,  
a fund of the American Online  
Giving Foundation  
Birlasoft, Inc.  
BKD CPAs & Advisors & BKD Foundation  
Natalie & Jack Blumenthal  
BOK Financial  
BPX Energy  
CannonDesign  
Centura Health  
Elizabeth G. Chambers & Ron Mooney  
Charles Schwab Foundation  
Colfax Marathon Partnership, Inc.  
Colorado Lighting  
Colorado Race Timing  
Colorado Rockies Baseball Club  
Moira Coogan & Matthew Carroll  
Davis Graham & Stubbs LLP  
Denver Art Museum  
Stephanie & Shannon Duffy  
Ferrovia  
David Fullagar  
George K. Baum Foundation  
David Hurtado  
Marsha & David Johnson  
JPMorgan Chase & Co.  
Kaiser Foundation Health Plan of Colorado  
Marcee & Rick Kinning  
Leprino Foods Company  
Lockton Companies  
Mark Young Construction, Inc.  
MidFirst Bank  
Jacqueline Molnar  
Rebecca Ann & Chuck Morris  
PCL Construction Services, Inc.  
PDC Energy  
Perkins Coie  
QEP Resources, Inc.  
Ready Foods, Inc.  
Jon Roitman  
Saunders Construction  
Sewald Hanfling Public Affairs  
David Sunshine  
Leo Tokar  
University of Denver  
Braden Wagner  
Westside Investment Partners, Inc.  
Janice & Dee Wisor  
YourCause, LLC  
Zayo Group  
Lisa Zoeller & Craig Umbaugh

## **\$1,000 to \$2,499**

Anonymous (3)  
Anonymous donor-advised fund  
of Schwab Charitable  
5Star Bank  
Kim Allegretti & James Galloway  
Anderson Mason Dale Architects

Anna Kathryn Ryan Fund, a donor-advised fund of Records-Johnston Family Foundation, Inc.  
Richard Baer  
John Baker  
Justin Ball & Eric Deffenbaugh  
Lauren & Alex Berv  
Kendra Valis Black & Eric Black  
Brooke & Bill Brown  
Brownstein Hyatt Farber Schreck, LLP  
Susan W. Burgamy  
Sara & Scott Carpenter  
Leanna Clark  
Marilyn Cleland  
Aimee & Jonathan Coleman  
Community First Foundation  
Continuum Partners, LLC  
Senator Michael Bennet & Susan Daggett  
Christine DeRose  
Donna & Bruce Dickinson  
Denise Dihle  
Kim Knous Dolan & Jeff Dolan  
DXC Technology Company  
El Pomar Foundation  
Elitch Gardens  
EON Office  
Rachele Espiritu & Alex Vo  
Jennifer Evans & Jonathan Postal  
Gay Faris & Dave Farmer  
Mark Ferrandino & Greg Wertsch  
Molly & Bryan Ferrer  
Darla Figoli  
Verónica Figoli & David M. Fleischer  
Lisa Flores & Rick Tallman  
Kristi & Michael Franko  
The Gart Companies  
Laura Lee & George Gastis  
GE Johnson Construction Company  
Leslie & Noel Ginsburg  
Golden Triangle Construction, Inc.  
Brooke & Thomas Gordon  
Groundfloor Media  
Karen & Bruce Guest  
Maria & Andrew Harwood  
Arlene & Barry Hirschfeld  
Hord Coplan Macht, Inc.  
Heidi & Bruce Hoyt  
Karen Jenni & Mark Fitzgerald  
Debra Kalscheur  
Kathryn & Tim Ryan Fund, a donor-advised fund of Records-Johnston Family Foundation, Inc.  
Jessica & Jonathan Kosares  
Candace & Mark Kristensson  
Leonard & Alice Perlmutter Charitable Foundation  
Liberty Oilfield Services  
Lorraine & Harley Higbie Fund, a donor-advised fund of The Denver Foundation  
Michelle Lucero  
Catherine & William Marlin  
Monica Martinez & John Huggins  
Patricia McClearn  
Ann McCullough  
Metropolitan State University of Denver  
The Meyers Family Foundation  
Carol Sue Miller  
MOA Architecture  
Moore-Niedermaier Family Foundation  
Timothy R. Morris  
Nancy & Robert Schulein Fund, a donor-advised fund of The Denver Foundation  
Barbara & Richard O'Brien  
Russell Parker  
Catherine Petros  
PFM Asset Management, LLC  
Marilyn & Bill Plummer  
PNC Bank N.A.  
RBC Capital Markets  
Ellen & Jeff Rehmar

Scott Remington  
Cari & Eric Riedlin  
Rosemary Rodriguez  
Ruth & Stephen Rohs  
Michael Rollin  
Anne Bye Rowe & Frank Rowe  
Amanda & Edward Sawyer  
Victoria Scott-Haynes  
Semple Brown Design  
Kathleen & Robert Snyder  
Soccer United Marketing, LLC  
Stand for Children  
Ann Hoyt Stolfa & David Stolfa  
Keren & Aaron Sturtz  
Mary Beth Susman  
Pamela & Christopher Telli  
TransPerfect  
University of Colorado Boulder  
University Park Elementary PTA  
Mary Rose & Grant Varveris  
Sharon & Dave Wienecke  
Marianne Woodward  
Xanterra Parks & Resorts

**\$500 to \$999**

Anonymous (7)  
50CAN  
Tamara Acevedo & Ramon Trujillo  
Josh Allen  
Richard Anderson  
Claudia & Edwin Asturias  
Autodesk Foundation, a YourCause, LLC Program Partner  
Marti Awad  
Nancy Bellew  
Deborah Blair-Minter  
Joan Brennan  
Amy Bringedahl  
Amy Brodsky  
Edward Brown  
Lauren Burneson  
Emily & Mark Bussey  
Lois Calvert  
Connie Casson  
Jay Champion  
Colorado State Bank and Trust  
Maranda Compton & Jordan Chase  
Virginia & Kevin Conwick  
Mary Cooper  
Shannon Corcoran  
David J. & Vicki Perlmutter Dansky Fund, a donor-advised fund of Rose Community Foundation  
Angela & Sean Duncan  
Alicia Economos  
Jenny Engle  
Eppstein Uhen Architects  
Fidelity Investments  
Dorit Fischer  
Maureen Fleming  
Wendell Fleming & Stephen Cunningham  
Violeta Garcia & J.F. Coronado  
Jolene Gonsorowski & Tony Corico  
John Graham  
Grant Beacon Middle School  
Nilsa Guerrero-Mahon & Dave Mahon  
Ron Guillot  
Hal & Beverly Haddon Fund, a donor-advised fund of The Denver Foundation  
Catherine Hance  
Tyler Hand  
Jane & Shultz Hartgrove  
Stephanie & Edward Harvey  
Annie & Josh Hatter  
Leslie Heins  
Hayden Hirschfeld  
Heidi & Boyd Hoback  
Jeff Hochstadt  
Jennifer Holladay  
Martha Holleman & Jim French

Ruth Hoptenbeck  
Poojita & Martin Hougaard  
Burt Hubbard  
Dennis Humphries  
Innovest Portfolio Solutions, LLC  
Heather Intres  
Barb Jones & David Suppes  
Mike Kalac  
Cheryl & Art Karstaedt  
Erin Kehoe  
Alyson & Scott Kempton  
Stacy & Darryl Kitchens  
Michelle Koyama & Tracy Allgeier  
Susan Kroes  
Carly & Jeff Lacy  
Molly & Chris Lane  
Latcon Corp  
Sarah & Jon Lehmann  
Liberty Latin America  
Susan & Leigh Lutz  
Catherine MacDonald  
Kelly Martin  
Kimberly Martinez  
Deborah Maruyama  
Matthew R. & Erika Sidney, a donor-advised fund at Schwab Charitable  
Tyler McPherson-Wimar  
Brenna & Kirk Mielenz  
Lisa Farber Miller & David Miller  
Mary Moser & William Richey  
Bill Myers  
National Philanthropic Trust  
National Western Stock Show  
Christine Nicholson  
Alicia Nieva-Woodgate  
Glenna Norvelle  
OfficeScapes Schools  
Carol & Gus Ostermann  
Lindsey Padrino  
Annie & Robert Patterson  
The Piton Foundation  
Point B, Inc.  
Maureen & Joseph Poli  
Nicole & David Portee  
Davon Renfrow  
Rebecca & Philip Reutlinger  
Liz Richards  
Sarah Ritchey & Jonathon Haradon  
Senator Ken Salazar & Hope Salazar  
Michael Salop  
Brittany Morris Saunders  
Bruce Savage  
Lindsay Senter & Aaron Stern  
Julia Shepherd  
Robin Smith  
Sandra & Kurt Stenmark  
Kristen Stevenson  
Anya Stinton  
Samantha & Jay Sturhahn  
Sy-Bazz Architecture, LLC  
Terri & Gordon Appell Fund, a donor-advised fund of Fidelity Charitable  
Irena & Michael Todd  
Pegi & Michael Touff  
Trenholme y Osuna Family Fund, a donor-advised fund at Schwab Charitable  
Trotsky Family Foundation  
Vanessa Trussell  
Jennifer & Timothy Walmer  
Stephanie Wasserman  
Kristin & Bill Waters  
Whiting Oil and Gas Corporation  
Patti & Dave Williams  
Richard Williams  
Dr. Patricia & Mr. Bernard Wintergalen  
Charlene Yaneza  
Andra & Kyle Zeppelin

## \$250 to \$499

Anonymous (5)  
Ashlee Adams  
AmazonSmile Foundation  
Laurie Baefsky  
Maeline & Robert Barnstable  
Dawn Bauer  
Theresa & Jeff Becker  
Ryan Beiser  
Kelly & Josh Benninghoff  
Laura Kate Berger  
Layla Betts  
Shelley & Joe Bonnin  
Maritza Dominguez Braswell  
Sarah & Jeff Bridich  
Daniel Brown  
Kelly & Ken Brown  
Linda & Wes Brown  
Kevin Brynestad  
Jill Bukowski  
Nita & Don Burkhardt  
Mary & Ronald Butz  
Diana Romero Campbell  
Stephanie Caraway & Allan Dibben  
Lisa Cashman  
Anna Centron  
Jane & Kenneth Christoffersen  
Jolon Clark  
Dori Claunch  
Coast to Coast Trade Show Services  
Catherine Cooney  
Giang & Ryan Cowles  
D.A. Davidson & Co.  
Veena & PK Dandapani  
Liz Davis  
Dehn Family Fund, a donor-advised fund  
at TIAA Charitable  
Shelby & Kurt Dennis  
Denver Kids, Inc.  
Denver Language School  
Denver Learning Professionals  
James Dorrrough  
John Dyer  
Lori Ealey  
Amber Elias  
Erin Ellis  
Dana Erickson  
Rachel & Brian Eschbacher  
Dave Espinosa  
Fran & Mike Fisher  
Barbara & Frank Fleischer  
Cindy & Les Fox  
Sarah Freeman  
Laci & Jon Gettings  
Elizabeth & Joel Grabois  
Bettina Grandey  
Dawn Loge Greer & Eldridge Greer  
Emma Grogan  
Micah Gurard-Levin  
Alexandria & John Hagan  
Sara Hamilton  
Lindsay & Chris Hand  
Jennifer & Steven Harris  
Todd Hauer  
Lynn Hawthorne & Andrew Loizeaux  
Anna Jo Haynes  
Happy Haynes  
Patrick Henry  
Tatiana Hernandez  
Genia Herndon  
Demasha Hill  
Brian Holland  
Lisa Horn  
Patricia & Martin Hurrieta  
Nicole & Joel Ibarra  
Tim Ikenouye  
Infor Public Sector, Inc.  
Sherri & James Jacoby  
John Jonen  
Mattie & Ruben Jones

Kate Kalstein  
Amy Keltner  
Ellen Kelty  
Julie Keppler  
Jennifer Kim  
Donna Kornfeld  
Timothy Leddy  
Kristin & Aaron Lentz  
Sophia & Elliott Lepert  
Pamela Loeffelman  
Joan Mast Loughridge  
Victor Luke  
Erin Magley  
Jana Mathieson  
Brenna McEvitt  
Angela McIntyre  
George D. McNear  
Toni & Paul Miller  
Mindbody, Inc.  
Caitlin Mohl  
Sarah Almy Moore & Gus Moore  
Chessie Morgan  
Morgridge Family Foundation  
Trisha Morris  
Nadia Madan Morrow  
David Naus  
Jennifer Nealson  
Ashley Nichols  
Cyril Obot  
Kerry O'Connell  
Maria Oxman  
Mike Painter  
Michael Pascucci  
Kelli & Evan Pfaff  
Theresa Piarrot  
Patrice Pierce  
Arunkumar Pillai  
James T. Polsfut  
Heather Pool  
Sean Precious & Noah Slauson  
Tanya Quinn  
Lorii Rabinowitz  
Brandy Radey  
Jon Rasmussen  
Kellen Reilly  
Kristina & Jimmy Reilly  
Lee Renfrow  
JoAnn Rivera  
Melinda Wiggins Robinson &  
Andrew Robinson  
Elizabeth Roscoe  
Lisa & Jack Rouff  
Katherine Rowe  
Alex Sanchez  
Mark Schultz  
Shannon & Andrew Schutz  
Peter Schwartz  
Stefanie & Alex Seldin  
Kyra Selvidge  
Barbara Sharp  
Katya Short  
Herbert Smith  
Taylor Smith  
Scott Springer  
Krista Spurgin  
Elizabeth Stock  
Samantha & David Stoler  
Suzy & Ryan Stone  
Angie & Mark Swanson  
Karen & Eric Tscharner  
Verizon Foundation  
The Visser Family  
Nicole Vogrin  
Diane & Jerry Wartgow  
Mallory Watson  
Lisa Weil  
Ashley & Michael Weiner  
Elyse & Jeremy Williams  
Stefanie Winfield  
Joan & Richard Wohlgenant

Kelsey Wood  
Denise & John Youngquist  
Nicole Zimmerman

## Up To \$249

Anonymous (52)  
Paul Aaker  
Kristy Adams  
Megan Alexander  
Feras Alhlou  
Elizabeth Allen-Parrish  
Angie Anania  
Lois Anderson  
Molly Anderson  
Teri Anderson & Bill Duffy  
Bernadette Apodaca  
Denise Aveline  
Jennifer Bacon  
Angela Baier  
Trish Bailado  
Kyle Baker  
Fred Ball  
Bank of America  
Eileen & Johnny Barela  
Jason Bargas  
Joanna Barker  
Karen Barker  
Susan & Mark Barter  
Sarah Bartlett  
Dalton Barton  
Katherine Taylor Beach  
Elmer Becker  
Jack Becker  
Angel Belardinelli  
Isabel Belliard  
Lili Bellule  
Michelle Berge  
Sally & Jim Bernsten  
Barbara Bieber  
R. Scott Bills  
Kathryn & Jimmy Black  
Scott Black  
Kristy & Chris Blackwood  
Kristen Blessman  
Lauren Boland  
Lee Bollacker  
Lyn Bollen  
Lindsay Bollwahn  
Nathan Bond  
Elva Bonnin  
Jeffry Braa  
Harriet & Eric Braden  
Lorna Brass & Michael Bleichfield  
Susan Marie Bredesen  
Ellen Brettell  
Miriam & Mitchell Brodsky  
Jessi Brown  
Logan Brown  
Timothy Brown  
DeVita Bruce  
Kari Bryan  
Barry Buck  
JC Buck  
Timothy Buczak  
Kaytie & Timothy Buell  
Stephen Buker  
Brittany Cowan  
Joe Caisse  
Karen & Jay Calderone  
Cheryl Caldwell & Win Deal  
Nanci Campbell  
Roslyn Cantrell  
Kyra Capizzani  
Danielle Cardona  
Voradel Carey  
Salvador Carrera  
Dawn Carrico  
Tanya & Mitchell Carter  
Nancy Casey  
Judith Cassel-Mamet & Samuel D. Mamet

Kiki Castle  
 CE Kahn Fund, a donor-advised fund  
 of Fidelity Charitable  
 Robin Chalecki  
 Sia Chandler  
 Jim Chavez  
 Teri Chavez & Scott Murphy  
 Paige & Matt Chorske  
 Cecily Citrino  
 Heather L. Clifton  
 Kathryn Clymer  
 Ann Cobb  
 Catherine Cole  
 Sara Collyar  
 Community Shares of Colorado  
 Drew Cooper  
 Gretchen Cooper  
 Rita Cordova  
 Douglas Cox  
 Kim & Clarence Crawford  
 Jane Crisler & Christopher Bennett  
 Lilly Croke  
 Jennifer Crowe  
 Katherine Crowley  
 Erica Crownhart  
 Cynthia & Joseph Dascher  
 Martha Davidson  
 Stuart Davis  
 Lisa de la Fleur  
 Ronald Deal  
 Ashley Dean  
 Claudia Deasy  
 Julie DeHerrera  
 Ami Desai  
 Hans Desai  
 Penelope & Adam Devoe  
 Monica Dilts-Nurrenbern  
 Kelly Dixon  
 Matthew Dodge  
 Mary & James Donovan  
 Travis Doris  
 Elizabeth Douma  
 Barbara Downing  
 Lisa Doyle  
 Burna Dunn  
 Lauren Dunn  
 Stacy Dvergsdal  
 Liza Eaton  
 Samson Eberhart  
 Susan & David Edwards  
 Dori & Rob Eggett  
 Jacqueline Elder  
 Lori Elliott  
 Susan & Larry Elliott  
 The Emanuel & Ellen Marritt Endowment,  
 a donor-advised fund of Schwab Charitable  
 Cathy & Patrick Emery  
 Tara Emrick  
 Adrienne Endres  
 Amy Engelman  
 Kelsey Erf  
 Tonantzin Espinoza  
 Carolyn & Don Etter  
 Barb Evans  
 Shila Fabiano  
 Nancy & Mike Farley  
 Margee Fawley  
 Michelle Fee  
 Robyn Fergus  
 Fevo  
 Collette Fischer  
 Susan & Paul Fishman  
 Cheryl Fleetwood & Christopher Adams  
 Jerre Fleming  
 Kathleen Fleming  
 Lauren Forsythe  
 Alexandra & Steve Foster  
 Lori Fox & Tom Downey  
 Hanna Franzblau  
 Lynn Rhodes Fritz  
 Marcia & Bill Fulton  
 Dan Gacnik  
 Lluvia Garcia  
 Rene Garcia  
 Liz Gardner  
 Kim & John Garrow  
 Jenni Gasbarro  
 Maureen & Michael Gearin  
 Marla & Richard Gentry  
 Chris George & Way Shen  
 Gabrielle Gerlits  
 Ashley Gethard  
 Sarah & Joe Glover  
 Tari Gold  
 Amy Golden  
 Jennifer Goldman  
 Sandra & Steve Goodman  
 Google, Inc.  
 Judith & Daniel Gordon  
 Melanie Grant  
 Kate Greeley  
 Margaret & Larry Green  
 Brook & Brian Griese  
 Martha Groebe  
 Brian Gross  
 Karen Grote & John Sadwith  
 Frank Gryglewicz  
 Karen Gudgel  
 Marne Gulley  
 Al Habercorn  
 Phillip Haberman  
 Sheena & Edward Hackstaff  
 Pamela & Norman Haglund  
 Margie Hahn  
 Sally Hallingstad  
 Mary Mead Hammond & David Hammond  
 Scott Handlevitch  
 Lyn Markman Hanson  
 Carol & David Harguth  
 Eunice Haro  
 Joshua Harris  
 Martha & James Hartmann  
 Rebecca & Gregory Hatcher  
 Rick Hatcher  
 Samantha Haviland  
 Lindsey Hazel  
 Debbie Hearty & Keith Roark  
 Carol Hedges  
 Katie Hein  
 Latia & Franklin Henderson  
 Glenn Hendricks  
 Carolyn Henzel  
 Stephanie Hervey  
 Kathleen Hill  
 Anne Hines  
 Taryn Hinken  
 Martina Hinojosa  
 Sarah Hite  
 Michelle Hix  
 Elsa Holguin  
 Michel Holien  
 Sean Holland  
 Richard Holme  
 Brandi Holten  
 Karla & Matt Hoppal  
 Kathleen Hortenstine  
 Michelle Ingrid Hosking  
 Kristin Hubbard  
 Jane Hultin  
 Lara Hussain  
 Cathy & Mark Hyams  
 Gizane Indart  
 Integro, Inc.  
 Jenny Jackson  
 Natalie Jacobsen  
 Beverly Jacobson  
 Casey James  
 Sarah Jennings  
 Mairlynn Jimenez  
 Jenifer & Dwight Jones  
 Meridith & David Jones  
 Tasha Jones  
 Wendy & Steve Kaeuper  
 Leta Kaffas  
 Courtney Kallas  
 Theresa & Bob Keatinge  
 Paula Keenan  
 Alice & Terry Kelly  
 Leota Kelsey  
 Gwendolyn Kerby  
 Rebecca & Russell Kerr  
 Cristina Krinz  
 Shane Knight  
 Noah Koch  
 Donna & Scott Koehler  
 Lucretia & Richard Koeppel  
 Thomas Kowal  
 Sarah Kurz  
 Henry Kusumi  
 Fredric Kutner  
 Dolly & Bert Lager  
 Dottie & Dick Lamm  
 Torrin Landolina  
 Lora Langlee  
 Cathy Lantzy  
 Carol Lassen  
 Marian Lauterbach  
 Emilie le Meur Seguin  
 Molly Leamon  
 Darlene LeDoux  
 Jonathon Lee  
 Joan & Harold Leinbach  
 Betsy Leonard  
 Shy Lev-Ari  
 Donna Levene  
 Renae Levin  
 Ramona Lewis  
 Maurice Liddy  
 Donn Livingston  
 Abigail Lodge  
 Jamie Lofaro  
 Jessica Long  
 Lucy Loomis  
 Posca Lou  
 Heather Lurie  
 Jedeane MacDonald  
 Leanne MacDonald  
 Tracey MacDonald  
 Emily Madison  
 Cheryl Madrid  
 Alex Magana  
 Evi & Evan Makovsky  
 Maria Marbach  
 Shari Marcelly  
 Denis Mark  
 Philippa Marrack & John Kaplan  
 Satya Myranda Marsh  
 Cathy Martin  
 Sherry Martin  
 Katherine Plog Martinez  
 Alexander Mattics  
 Cathy & John McCabe  
 Margaret & Derek McCandless  
 Barb & Steve McDonald  
 Moira McNeil  
 Lindsay McNicholas & Matthew Gray  
 Sarah Melching  
 Mele Leahy Foundation, a donor-advised  
 fund of Fidelity Charitable  
 Elizabeth Mendez  
 Nancy Mentzer  
 Gretchen Meyer  
 Josiane Michelix  
 Microsoft Matching Gifts Program  
 Donna Middlebrooks & Tom Gougeon  
 Keri & Clayton Miller  
 Micah Miller  
 Michelle Miller  
 Ellen Miller-Brown  
 Jessica Milnes

Stuart Miner  
Erica Mitchell  
Leslie Mitchell & Rob Insinger  
Joanna Moldow  
Lisa Montagu  
Janet Mordecai  
Madge Morgan  
Sherri & William Morgan  
Kerry Morimoto  
Kolby Morris-Dahary  
Margy Moseley  
Lorraine & Mario Mrva  
Bart Muller  
Gilbert Muñoz  
Ashley & Alex Muramoto  
Beth Murphy  
Nance & Joe Nassar  
Allison Neckers  
Jamie & Steve Nederveld  
David Nelson  
Lacey & M. K. Nelson  
Lindsay Newell  
Roberta Nicknish  
Lexie Nimick  
James Nora, Jr.  
Amelia Norfleet  
Rebecca O'Brien  
Dan O'Connell  
Carolyn & William O'Donnell  
Michael O'Keeffe  
Susan Olezene  
Paula & Tom Ortlieb  
Su Pal  
Freida & Michael Palmieri  
Frank Parce  
Eileen Parker  
Roosevelt Parker  
Devon Parrish  
Todd Parsons  
Diane Payne  
Gordon Pelton  
Ilse Peters & Richard Sharpnack  
Patricia Peterson  
Lillian & James Phelps  
Robert Phipps  
Roma Pitt  
Gail Ploen  
Anne & Adam Poe  
Kathleen Porter  
Lea Porter  
Mindy Powers  
Rich Powers  
Kathleen Price  
Kelly Pugh  
Kate Raabe  
Baird Ramsey  
Ludivina Rascon  
Linda Redstone  
Laura Reeves  
Pam & Lee Reichert  
Kevin Reilly  
Kimberly & Jean-Noël Reynders  
Nancy Reynolds  
Lisandra Reynoso  
Jill Richards  
Sally & Gordon Rippey  
Emily & Cesar Rivera  
Libby Rivers  
Jeanne Robb  
Cherie Roberge  
Robin & Jay McCarthy Fund, a donor-  
advised fund at Schwab Charitable  
Katell Marmasse Robino  
Rocky Mountain Prep Creekside  
Dawn Roedel  
Tara Rojas  
Elinor Roller  
Julie Naski Roman  
Jason Romero  
Shannon Wood Rothenberg

Nicolette Rounds  
Lisa Roy  
Francine Ruybal  
Donald Ryan  
Benilda Samuels  
Michele Sandoval  
Sandra & Martin Goldhaber Fund, a  
donor-advised fund at Schwab Charitable  
Karen & David Sanger  
Karen & Jon Sawyer  
Kristy Sawyer  
Laura Schaub  
Sandra Scherer  
Ray Schraeder  
Monica Schultz  
Rachel Schwab  
Jessica Schwarz  
Robert Scofield  
Lynn & Tom Seaman  
Raymond Bryon Searing  
Ellen & Andy Selig  
Jean Settles  
Timothy Severance  
Phillip Sevier  
Amy Shaughnessy  
Shad Shepherd  
Kurt Siebold  
Stan Siefer  
Sean Silvers  
Nina & Tom Sisk  
Amanda Skrzypchak  
Judy & Gary Sliwinski  
Nancy Small  
Bethany Smith  
Tina Smith  
Suzanne & Marshall Snider  
Krista & Dean Soderberg  
Michele Sorensen  
Chiara Spavieri  
Amy Sponsler  
Rebecca Sposato  
Gayle Stallings  
Lynn Stambaugh  
Jim Staples  
Roslyn & Jonathan Steeler  
Ellen K. Steinmetz  
Tom Stevens  
Helen & Lyle Stewart  
Isak Stolen  
Michael Stone  
Carol Stroderd  
Arys Subiadur  
Russ Sullivan  
Laura Lee Summers  
Tiffany Cooley Sylvan  
Peggy Talbot  
Laurie & John Tatlock  
Stacy Taubman  
Barbara S. Taylor  
Denise Thorne  
Beverly Thygesen  
Ted Tinsman  
Nancy & Scott Tipton  
Gabrielle Tonk  
Kay & Thomas Toomey  
Haleh Torbaghan  
Claire Treacy  
Ronald Trigo  
Alissa Trumbull  
Mary & Michael Tully  
Elise Unger  
John Unger  
University of Colorado Denver  
Marvia Valdez  
Guillermo Valenzuela  
Helen Van Anne  
Wendy Vance  
Meg & John VanderLaan  
Shanda Vangas  
Kelli & Kent Varney

Brenda Vasquez  
Christina Vela  
Lisa Vela  
Nicole Veltze  
Venus Global, Inc.  
Renee Verspoor  
Kelly Villa  
Liliana Melendez Villarreal  
Janet Lopez Vilsack  
Laila Viltz  
Stephen Vogler  
Sarah Volkert  
Angie Vossler  
Peter Wall  
Jane & Bill Walsh  
John Walsh  
Nancy Walsh & Ted Vidal  
Christopher Ward  
Melissa Ward  
Chris Watney & Rob Gary  
Wendy & Richard Weiskopf  
Bridgette Weiss  
Catherine Welch  
Ceci Wells  
Milly Westphalen  
Ann Whalen  
Brian Whitworth  
Katie Wienecke  
Nathaniel Wilcox  
Erran Willoughby  
Hugh Wilson  
Leigh & Michael Wilson  
Sarah Winbourn & Trinidad Rodriguez  
David Woessner  
Caitlin Woolums  
Jordan Worthington  
Alison Wright  
Dwayne Yazzie  
Stephanie Yemm  
Brad Yohe  
Lisa Young  
Rebecca Zachmeier